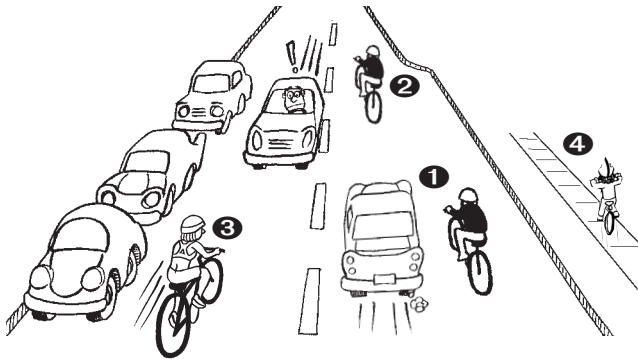
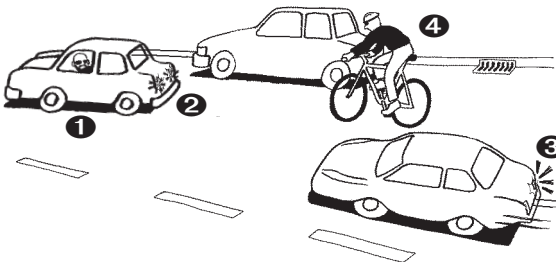


Where bikers should ride



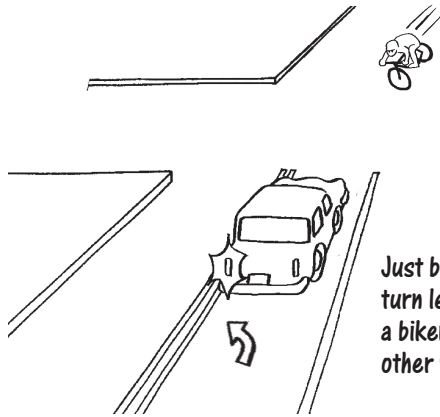
- ❶ In a wide lane, bikers can share the lane with car drivers.
- ❷ In a narrow lane, bikers should ride in the middle so cars don't squeeze them out of the traffic lane. Also, bikes stop suddenly: To avoid a **REAR END** crash, don't follow closely.
- ❸ Bikers shouldn't ride **HEAD ON** against traffic! If you see this, slow down and pass them with lots of room.
- ❹ Kids usually ride on sidewalks. The law says people over 11 years old should ride on streets.

Stopping, parking, and pulling out: don't FAIL TO YIELD

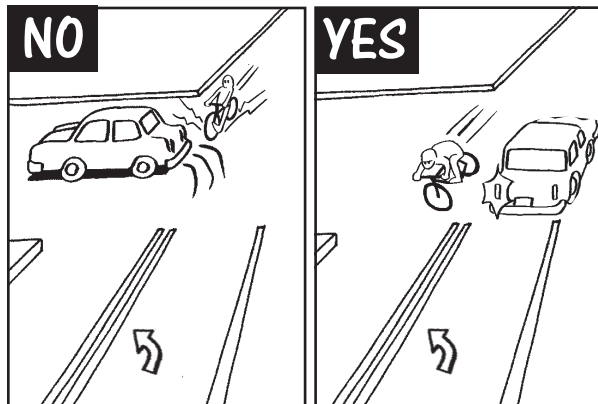


- ❶ When you stop temporarily, put on your emergency flashers so bikers notice you
- ❷ Before you pull out, look over your left shoulder for bikers in your blind spot.
- ❸ Before you pull over, put on your turn signal.
- ❹ If you see a biker on the right, let them pass.

What to do before turning left: Avoiding the LEFT HOOK



Just before you turn left, you see a biker coming the other way.



Don't turn in front of the biker; you'll cut them off or hit them—the **LEFT HOOK**. (Many bikers move faster than you think they do.)

Wait for the biker to pass the intersection before you turn. (Use your turn signal, so they know what you plan to do.)

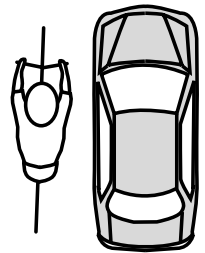
TIPS FOR MOTORISTS

Sharing the road with bicycle riders

Why do people bicycle?

People you see bicycling do it for a few different reasons. Among them:

- **EXERCISE.** Bicycling helps people stay healthy. Some even bicycle to get to their office jobs.
- They care about **CLEAN AIR**, and they know that car traffic makes our air dirty.
- **FUN.** Riding a bike lets people see more of everything around them—and biking makes it easier to meet and talk with other people.



Why should you learn how to drive next to bikers?

You should learn about bikers so you can keep from getting into bike crashes. Many different kinds of things cause bike crashes—for example, potholes, slippery pavement, and junky bikes. But those crashes don't hurt bikers as badly as crashes with motor vehicles; cars make for the biggest danger. That's why the City of Chicago and the State of Illinois created this guide: so you can find out what causes bikers to crash with cars, and learn to avoid those crashes.

Created by the Chicagoland Bicycle Federation for the Chicago Department of Transportation.

Funded by the Illinois Department of Transportation, Division of Traffic Safety.

Copyright © 2001 by the Chicagoland Bicycle Federation.
Inquiries: Room 300, 650 S. Clark St., Chicago, Illinois 60605
Phone: 312/427-3325. Web: www.biketraffic.org

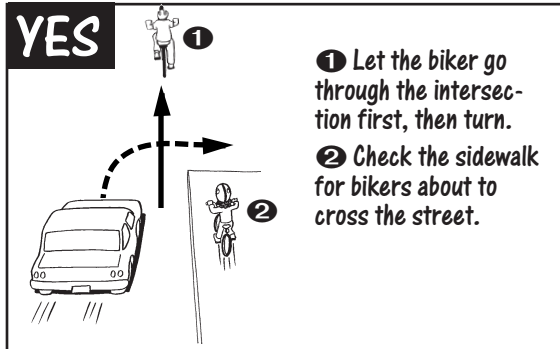
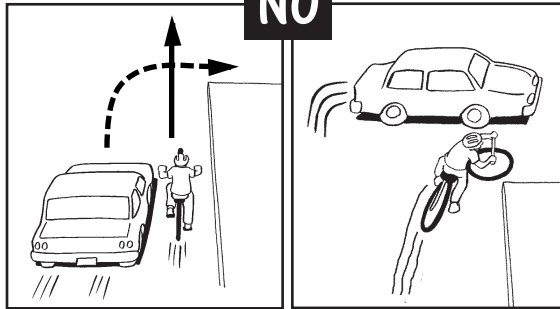


Illinois Department of Transportation
Division of Traffic Safety

Just before a right turn: Avoiding the RIGHT HOOK

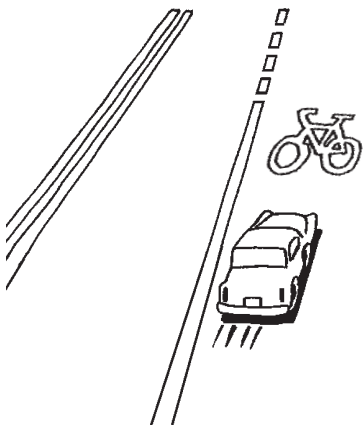
Just before you turn right, you see a biker riding on the right.

Don't pass the biker; you'll cut them off (the RIGHT HOOK).



- 1 Let the biker go through the intersection first, then turn.
- 2 Check the sidewalk for bikers about to cross the street.

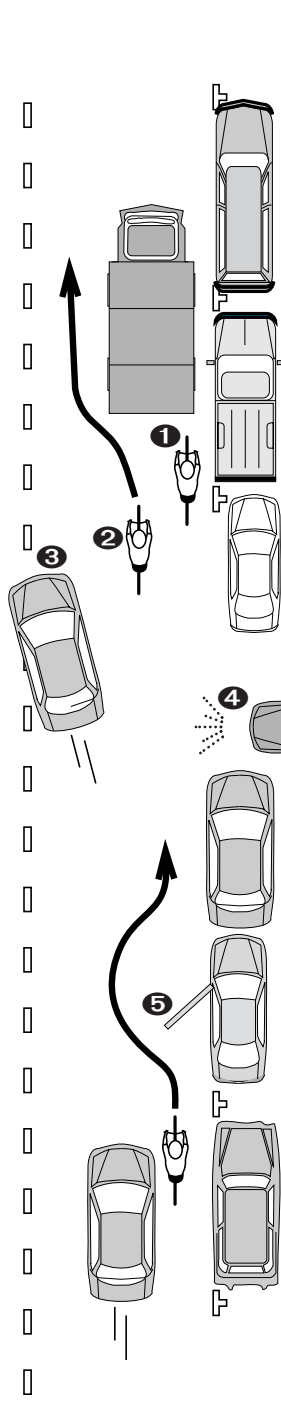
Don't drive in bike lanes



NO

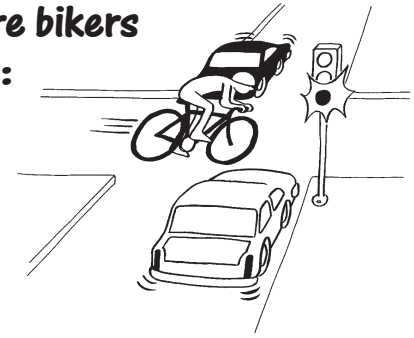
Don't drive in bike lanes (except just before you make a right turn). You'll make bikers afraid to use them.

Passing bikers in a traffic lane



- 1 Some bikers ride far to the right.
- 2 Some bikers ride farther to the left, so they don't get hit by opening doors.
- 3 If you can, you should change lanes before passing bikers. If you can't change lanes, always slow down and pass bikers with at least three feet of space.
- 4 Avoiding a DRIVE-OUT: Before exiting an alley or driveway, stop, sound your horn, and look for bikers on the sidewalk and street.
- 5 If a biker swerves into your lane to avoid something, you should YIELD: Wait until they move back to the right before passing, OR change lanes before passing. Then, wait until you can see them in your mirror before going back into the lane.

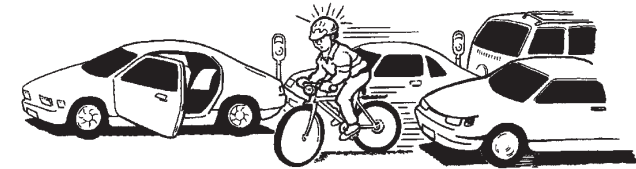
Coming to a cross street where bikers should stop: avoiding a SIDE HIT



When traffic on a cross street has a red light or a stop sign, bikers should stop. But many don't!

When you see a biker coming to a red light or stop sign, get ready to brake; the biker might cross in front of you.

Getting out of your car: Avoiding a DOORING



Before you get out

Before you get out of your car, look over your left shoulder for bikers. If you see a biker coming, wait until they pass before you open your door.

If a biker rides too close to your car and you open your door, they'll hit the door.

Before your passengers get out

Before your passenger opens the door, ask them to look behind for bikers. If they see a biker, they should keep the door closed until the biker passes.

