

Value of the Illinois WorldCat Discovery Subscription

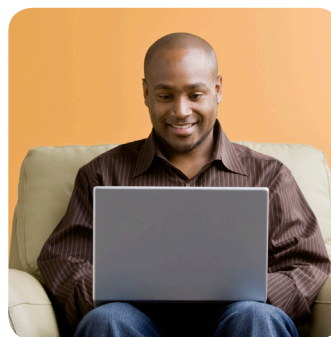
The Illinois State Library subscription to WorldCat Discovery Services is a continuation of the previous FirstSearch Base Package subscription at no additional cost, with the addition of new and expanded functionality for library staff and library users. The new service gives Illinois residents unlimited access to the collections of Illinois libraries plus 1.8 billion electronic, digital and physical resources in libraries around the world through a single search of WorldCat and WorldCat Discovery's central index representing more than 2,000 e-content collections.

The Illinois State Library WorldCat Discovery subscription supports the reference, discovery, resource sharing and genealogical research needs of libraries across the state. Through WorldCat Discovery, people in Illinois can find the many types of materials provided by their local libraries – from print books and DVDs to online articles and eBooks – and in libraries across the state, the country and around the world. They can also request items not available in their local library from other libraries in OCLC's global resource sharing network.

The subscription gives Illinois library collections in WorldCat visibility on WorldCat.org and more than 50 popular consumer and research websites such as Google, Goodreads, FamilySearch, National Public Radio Book Concierge and Wikipedia where people usually begin their research. From these sites, searchers can link back to local libraries to obtain the resources they need.

A cost-effective solution

WorldCat Discovery is the only service that provides electronic, digital and physical discovery and fulfillment on this scale. The State Library's subscription is cost-effective, delivering this unique resource to thousands of libraries in the state at a cost that is over 75% below what individual libraries would pay for the same service.



The Illinois State Library WorldCat Discovery subscription gives Illinois libraries:

1. Public services access to the WorldCat database.

The subscription provides access to a resource library staff and users rely on to find authoritative resources available in the world's library collections. WorldCat is the most comprehensive database of library bibliographic information in the world. It represents the collections of thousands of OCLC member libraries in Illinois and around the world and is available exclusively from OCLC.

A unique reference source, the depth and breadth of the WorldCat database are unparalleled for answering reference questions.

- **Easily discover information by and about authors.**
- **Discover digital resources** from libraries' special collections.
- **Enable genealogists to use WorldCat** to locate hard-to-find genealogical materials such as cemetery records, church histories, diaries and journals, family histories, historic photographs and more in local history collections.

2. A tool for sharing resources among Illinois libraries and beyond the state. Use WorldCat Discovery to identify resources not available locally and request from other libraries through interlibrary loan. No other single source gives you a view of the collections of so many libraries.

3. Full-featured searching designed for end users and library staff. Search functionality goes beyond that provided in OCLC's cataloging or WorldShare Interlibrary Loan services. Multiple search interfaces support simple keyword searches through a single search box and complex searching techniques required by experienced searchers.

4. Discovery of more than 16 million eBooks from popular content providers. WorldCat Discovery's central index contains more eBook records than any other source today.

5. A mobile presence. Reach your users on the devices they use every day. The WorldCat Discovery interface adapts automatically to any device with no special software or applications.

6. Links to open access. Connect your users to 8 + million open access items from sources such as HathiTrust and OALster without adding costly database subscriptions.

7. A place to showcase local digital collections. Examples of Illinois digital collections are materials from the Illinois Digital Archives, Electronic Documents of Illinois and histories of Illinois counties.

8. Visibility on the Web where your users start their research. People who might not turn to your library for information, will see links to libraries – including yours – from more than 50 familiar websites, including Google, Goodreads, FamilySearch, National Public Radio Book Concierge and Wikipedia. In the last three years, there have been nearly 2 million visits to Illinois library catalogs from WorldCat.org.

For more information

Visit the WorldCat Discovery Services site at <http://oc.lc/WorldCatDiscovery>.

Web visibility for Illinois library collections

Web search engines and other partners crawl WorldCat data and display information about library materials in search results. Searchers select an individual title to view bibliographic information and a list of the libraries closest to them that own the item. From the library list, they can click on an item to link to an item's record in a library's OPAC. Once in a library's OPAC, users can perform any actions permitted by the library, including placing a hold for the item by authenticated users. User IP addresses identify where a user is located and WorldCat Discovery uses this geo-location information to identify nearby libraries that own the item. Any user can also retrieve a list of owning libraries near any postal code they enter.

Based on current activity, we expect more than 80 million clicks to WorldCat from search engines and other OCLC partner sites between July 2014 and June 2015. We also expect that 10 million people who reach WorldCat from a partner website will go on to click through to a library website to obtain the resources they need.